



NANDHA ENGINEERING COLLEGE

(Autonomous)

Affiliated to Anna University Chennai ★ Approved by AICTE ★ Accredited by NBA-New Delhi
Pitchchandampalayam (PO), Vaikkalmedu , Erode, Perundurai Road, ERODE –638 052.



DEPARTMENT OF MANAGEMENT STUDIES

Attainment of course outcomes (COs), Program outcomes (POs)

The POs are evaluated using Microsoft Excel that simplifies CO and PO Attainment calculation for every course

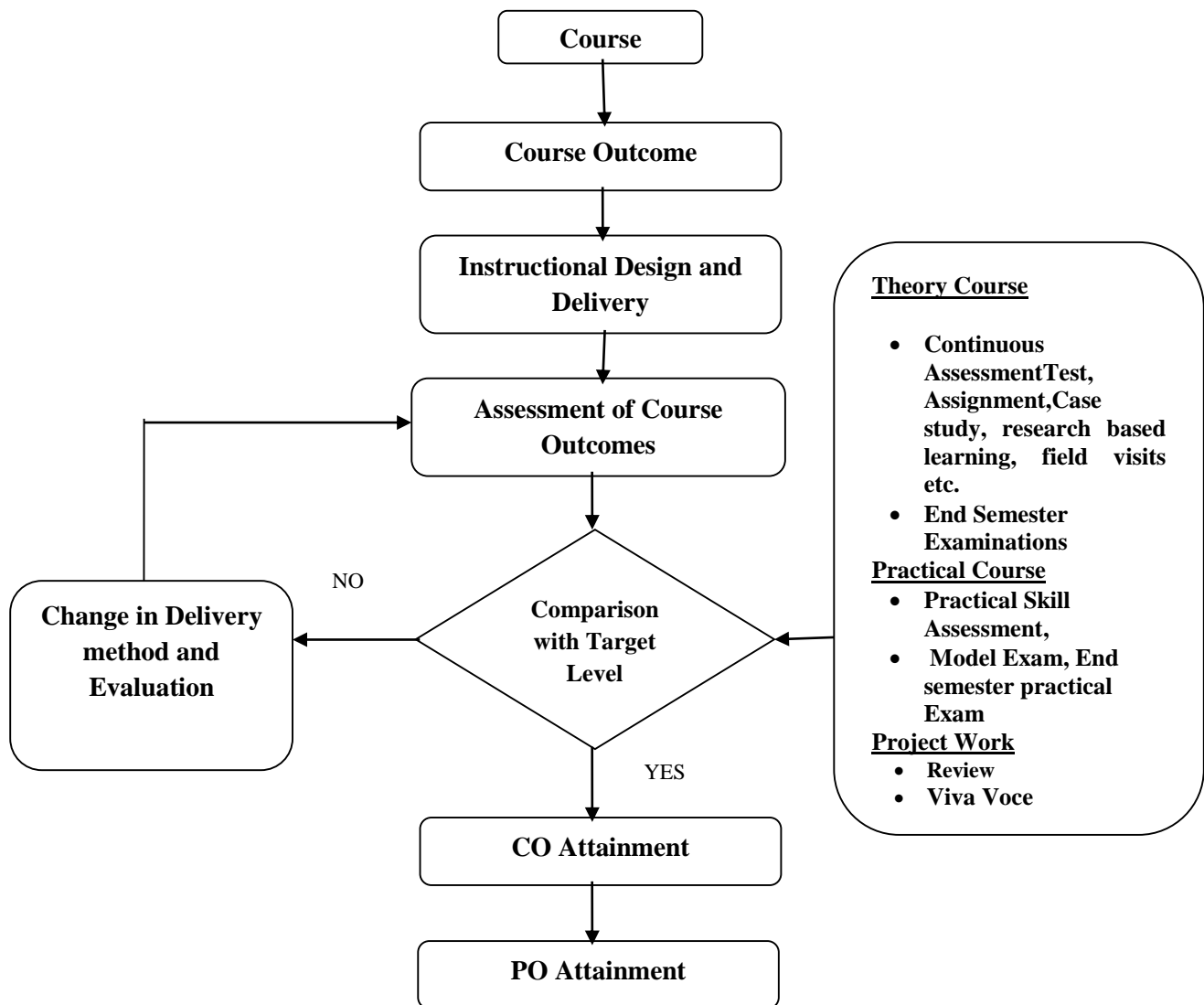


Fig.1. Assessment Methods to Assess the Attainment of the Course Outcomes



NANDHA ENGINEERING COLLEGE

(Autonomous)

Affiliated to Anna University Chennai ★ Approved by AICTE ★ Accredited by NBA-New Delhi
Pitchchandampalayam (PO), Vaikkalmedu , Erode, Perundurai Road, ERODE –638 052.



DEPARTMENT OF MANAGEMENT STUDIES

1. Direct Assessment Methods

i. Direct assessment is done by processes of analyzing performance of students in

- ❖ Continuous Assessment Test
- ❖ Assignments
- ❖ Case Study
- ❖ End Semester Examinations

Direct CO Attainment = 60% Weightage of End Semester Examination + 24% of CAT + 8% of Assignment + 6% of Case Studies+2% of Seminar

2. Indirect Assessment Methods

Indirect assessment Methods are calculated from course end survey reports collected at the end of every semester for each course.

In the form students will provide their feedback on 3 point Scale as follows

3-Good

2-Satisfactory

1-Needs to Improve

After collection of individual survey forms, the marks for COs are calculated based on the following formula:

Each CO calculation = [(No. of Students Given Good* 3+ No. of Students Given Satisfactory * 2+ No. of Students Given Needs to Improve *1) / (No of Students*3)]*100

The above formula is used to calculate the marks for indirect attainment of each COs of all the courses in the curriculum in the respective regulation.



NANDHA ENGINEERING COLLEGE

(Autonomous)

Affiliated to Anna University Chennai ★ Approved by AICTE ★ Accredited by NBA-New Delhi
Pitchchandampalayam (PO), Vaikkalmedu , Erode, Perundurai Road, ERODE –638 052.



DEPARTMENT OF MANAGEMENT STUDIES

Final Overall CO Attainment

Final CO attainment for each course is calculated based on the contribution of direct and indirect assessments as per the weightage given below:

1. Direct Assessment (80%)
2. Indirect Assessment (20%)

Final CO attainment level = [(80% Direct assessment + 20 % Indirect assessment)/ 100]

Regulation 2017

Table 1: Continuous Assessment and End Semester Mark Split up for Various Courses

S.No	Category of the course	Continuous Assessment (CA) Marks	End Semester(ES) Marks	Total Marks
1	Theory Courses	40	60	100
2	Laboratory Courses	60	40	100
3	Project Work	40	60	100
4	Employability Enhancement Courses (EEC), One Credit Courses, Mini Project, Human Excellence Courses, Etc.,	100	-	100



NANDHA ENGINEERING COLLEGE

(Autonomous)

Affiliated to Anna University Chennai ★ Approved by AICTE ★ Accredited by NBA-New Delhi
Pitchchandampalayam (PO), Vaikkalmedu , Erode, Perundurai Road, ERODE –638 052.



DEPARTMENT OF MANAGEMENT STUDIES

Regulation 2022

Table 2: Continuous Assessment and End Semester Mark Split up for Various Courses

S.No	Category of the course	Continuous Assessment (CA) Marks	End Semester(ES) Marks	Total Marks
1	Theory Courses	40	60	100
2	Laboratory Course	60	40	100
3	Project Work	40	60	100
4	Other Employability Enhancement Courses (EEC)	100	-	100



NANDHA ENGINEERING COLLEGE

(Autonomous)

Affiliated to Anna University Chennai ★ Approved by AICTE ★ Accredited by NBA-New Delhi
Pitchandampalayam (PO), Vaikkalmedu , Erode, Perundurai Road, ERODE –638 052.



DEPARTMENT OF MANAGEMENT STUDIES

Regulation 2017



NANDHA ENGINEERING COLLEGE

(Autonomous)

Affiliated to Anna University Chennai ★ Approved by AICTE ★ Accredited by NBA-New Delhi
Pitchchandampalayam (PO), Vaikkalmedu , Erode, Perundurai Road, ERODE –638 052.



DEPARTMENT OF MANAGEMENT STUDIES

Internal Assessment Process

Table 3: Continuous Assessment Process for Theory Course

S.No	Components for Continuous Assessment Marks	Syllabus Coverage for the Test	Duration of the test in Hrs	Marks (Max.)
1	Continuous Assessment-I	1-2.5 Units	1.5 Hrs	60
2	Continuous Assessment-II	2.5-5 Units	1.5 Hrs	60
3	Assignment-I	1-2.5 Units	-	20
4	Assignment-II	2.5-5 Units	-	20
5	Case Study-I	1-2.5 Units	-	15
6	Case Study-II	2.5-5 Units	-	15
7	Seminar	1-5 Units	-	10
Continuous Assessment Marks				200*(Converted to 40)

Table 4: Continuous Assessment Process for Laboratory Course

S.No	Evaluation of laboratory Experiments	Marks	Total Marks
1	Preparation	10	100*(converted to 75)
2	Conduct of Experiments	30	
3	Observation &Result	30	
4	Record	10	
5	Viva voce	20	
6	Model practical Examination-I	-	50*(Converted to 12.5)
7	Model practical Examination-II	-	50*(Converted to 12.5)
Continuous Assessment Marks			100*(Converted to 60)



NANDHA ENGINEERING COLLEGE

(Autonomous)

Affiliated to Anna University Chennai ★ Approved by AICTE ★ Accredited by NBA-New Delhi
Pitchchandampalayam (PO), Vaikkalmedu, Erode, Perundurai Road, ERODE –638 052.



DEPARTMENT OF MANAGEMENT STUDIES

Table 4: Internal Assessment Process for Project Work

S.No	Components for Continuous Assessment Marks	Marks	Total Marks
1	Review-I	10	40
2	Review-II	15	
3	Review-III	15	
Continuous Assessment Marks			40 Marks

End Semester Assessment Process

Table 5-End Semester Assessment process for Theory Course

S.No	Components of End Semester Assessment Marks	Syllabus Coverage for the Test	Duration of the test in Hrs	Marks (Max.)
	Continuous Assessment-I	1-2.5 Units	1.5 Hrs	60
	Continuous Assessment-II	2.5-5 Units	1.5 Hrs	60
	Assignment-I	1-2.5 Units	-	20
	Assignment-II	2.5-5 Units	-	20
	Case Study-I	1-2.5 Units	-	15
	Case Study-II	2.5-5 Units	-	15
	Seminar	1-5 Units	-	10
Continuous Assessment Marks				200*(Converted to 40)
	End Semester Examination	5 Units	3 Hrs	100*(Converted to 60)
TOTAL MARKS				100



NANDHA ENGINEERING COLLEGE

(Autonomous)

Affiliated to Anna University Chennai ★ Approved by AICTE ★ Accredited by NBA-New Delhi
Pitchchandampalayam (PO), Vaikkalmedu , Erode, Perundurai Road, ERODE –638 052.



DEPARTMENT OF MANAGEMENT STUDIES

Table 6-End Semester Assessment process for Laboratory Course

S.No	Components for End Semester Assessment	Marks	Total Marks
(Continuous Assessment Process) (Evaluation of Laboratory Experiments)			
1	Preparation	10	100*(converted to 75)
2	Conduct of Experiments	30	
3	Observation &Result	30	
4	Record	10	
5	Viva voce	20	
6	Model practical Examination-I	-	50*(Converted to 12.5)
7	Model practical Examination-II	-	50*(Converted to 12.5)
Continuous Assessment Marks			100*(Converted to 60)
End Semester Examination (Evaluation of Laboratory Experiments)			
<ul style="list-style-type: none"> • Preparation – 10 Marks • Conduct of Experiments - 30 Marks • Observation & Results – 30 marks • Record – 10 Marks • Viva Voce – 20 Marks 			100*(Converted to 40)
Total Marks			100

Table 7: End Semester Assessment Process for Project Work

S.No	Components for End Semester Assessment	Marks	Total Marks
Continuous Assessment Process			
1	Review-I	10	40
2	Review-II	15	
3	Review-III	15	
End Semester Assessment			
Thesis Evaluation(External Examiner)		25	60
Internal Examiner		10	
External Examiner		15	
Supervisor		10	
Total Marks			100 Marks



NANDHA ENGINEERING COLLEGE

(Autonomous)

Affiliated to Anna University Chennai ★ Approved by AICTE ★ Accredited by NBA-New Delhi
Pitchandampalayam (PO), Vaikkalmedu , Erode, Perundurai Road, ERODE –638 052.



DEPARTMENT OF MANAGEMENT STUDIES

Regulation 2022



NANDHA ENGINEERING COLLEGE

(Autonomous)

Affiliated to Anna University Chennai ★ Approved by AICTE ★ Accredited by NBA-New Delhi
Pitchandampalayam (PO), Vaikkalmedu , Erode, Perundurai Road, ERODE –638 052.



DEPARTMENT OF MANAGEMENT STUDIES

Internal Assessment Process

Table 8: Continuous Assessment Process for Theory Course

S.No	Components for Continuous Assessment Marks	Syllabus Coverage for the Test	Duration of the test in Hrs	Marks (Max.)
1	Continuous Assessment-I	1-2.5 Units	1.5 Hrs	60
2	Continuous Assessment-II	2.5-5 Units	1.5 Hrs	60
3	Assignment-I	1-2.5 Units	-	20
4	Assignment-II	2.5-5 Units	-	20
5	Case Study-I	1-2.5 Units	-	15
6	Case Study-II	2.5-5 Units	-	15
7	Seminar	1-5 Units	-	10
Continuous Assessment Marks				200*(Converted to 40)

Table 9: Continuous Assessment Process for Laboratory Course

S.No	Evaluation of laboratory Experiments	Marks	Total Marks
1	Preparation	10	100*(converted to 75)
2	Conduct of Experiments	30	
3	Observation &Result	30	
4	Record	10	
5	Viva voce	20	
6	Model practical Examination-I	-	50*(Converted to 12.5)
7	Model practical Examination-II	-	50*(Converted to 12.5)
Continuous Assessment Marks			100*(Converted to 60)



NANDHA ENGINEERING COLLEGE

(Autonomous)

Affiliated to Anna University Chennai ★ Approved by AICTE ★ Accredited by NBA-New Delhi
Pitchchandampalayam (PO), Vaikkalmedu , Erode, Perundurai Road, ERODE –638 052.



DEPARTMENT OF MANAGEMENT STUDIES

Table 10: Internal Assessment Process for Project Work

S.No	Components for Continuous Assessment Marks	Marks	Total Marks
1	Review-I	10	40
2	Review-II	15	
3	Review-III	15	
Continuous Assessment Marks			40 Marks

End Semester Assessment Process

Table 11-End Semester Assessment process for Theory Course

S.No	Components of End Semester Assessment Marks	Syllabus Coverage for the Test	Duration of the test in Hrs	Marks (Max.)
1	Continuous Assessment-I	1-2.5 Units	1.5 Hrs	60
2	Continuous Assessment-II	2.5-5 Units	1.5 Hrs	60
3	Assignment-I	1-2.5 Units	-	20
4	Assignment-II	2.5-5 Units	-	20
5	Case Study-I	1-2.5 Units	-	15
6	Case Study-II	2.5-5 Units	-	15
7	Seminar	1-5 Units	-	10
Continuous Assessment Marks				200*(Converted to 40)
1	End Semester Examination	5 Units	3 Hrs	100*(Converted to 60)
TOTAL MARKS				100



NANDHA ENGINEERING COLLEGE

(Autonomous)

Affiliated to Anna University Chennai ★ Approved by AICTE ★ Accredited by NBA-New Delhi
Pitchandampalayam (PO), Vaikkalmedu , Erode, Perundurai Road, ERODE –638 052.



DEPARTMENT OF MANAGEMENT STUDIES

Table 12-End Semester Assessment process for Laboratory Course

S.No	Components for End Semester Assessment	Marks	Total Marks
(Continuous Assessment Process) (Evaluation of Laboratory Experiments)			
1	Preparation	10	100*(converted to 75)
2	Conduct of Experiments	30	
3	Observation &Result	30	
4	Record	10	
5	Viva voce	20	
6	Model practical Examination-I	-	50*(Converted to 12.5)
7	Model practical Examination-II	-	50*(Converted to 12.5)
Continuous Assessment Marks			100*(Converted to 60)
End Semester Examination (Evaluation of Laboratory Experiments)			
<ul style="list-style-type: none"> • Preparation – 10 Marks • Conduct of Experiments - 30 Marks • Observation & Results – 30 marks • Record – 10 Marks • Viva Voce – 20 Marks 			100*(Converted to 40)
Total Marks			100

Table 13: End Semester Assessment Process for Project Work

S.No	Components for End Semester Assessment	Marks	Total Marks
Continuous Assessment Process			
1	Review-I	10	40
2	Review-II	15	
3	Review-III	15	
End Semester Assessment			
Thesis Evaluation(External Examiner)		25	60
Internal Examiner		10	
External Examiner		15	
Supervisor		10	
Total Marks			100 Marks



NANDHA ENGINEERING COLLEGE

(Autonomous)

Affiliated to Anna University Chennai ★ Approved by AICTE ★ Accredited by NBA-New Delhi
Pitchchandampalayam (PO), Vaikkalmedu , Erode, Perundurai Road, ERODE –638 052.



DEPARTMENT OF MANAGEMENT STUDIES

Record the attainment of Course Outcomes of all courses with respect to set attainment levels

Program shall have set Course Outcome attainment levels for all courses.

Measuring CO Attainment through Cumulative Internal Examination (CIE)

Target may be stated in terms of percentage of students getting more than class average marks or set by the program in each of the associated COs in the assessment Instruments (Mid-term Tests, Assignments, Mini Projects, Reports and Presentations etc. As Mapped with the COs)

Measuring Course Outcomes Attained through End Semester Examinations (ESE)

Target may be stated in terms of percentage of students getting equal or more than the target set by the program in ESE for each CO.



NANDHA ENGINEERING COLLEGE

(Autonomous)

Affiliated to Anna University Chennai ★ Approved by AICTE ★ Accredited by NBA-New Delhi
Pitchchandampalayam (PO), Vaikkalmedu , Erode, Perundurai Road, ERODE –638 052.



DEPARTMENT OF MANAGEMENT STUDIES

THEORY COURSE
SAMPLE ATTAINMENT
FORMAT



NANDHA ENGINEERING COLLEGE

(Autonomous)

Affiliated to Anna University Chennai ★ Approved by AICTE ★ Accredited by NBA-New Delhi
Pitchchandampalayam (PO), Vaikkalmedu, Erode, Perundurai Road, ERODE –638 052.



DEPARTMENT OF MANAGEMENT STUDIES

Assignment Attainment:

NANDHA ENGINEERING COLLEGE, ERODE-638052

DEPARTMENT OF MANAGEMENT STUDIES

ASSIGNMENT I ANALYSIS

COURSE CODE & COURSE NAME:

FACULTY NAME:



Each question Expected Level of attainment - 70%

S N o	TOTAL STRENGTH =36		
	ROLL NO	A1 (5)	TEST SCORE
	Expected Marks to attainment		
1	20BA001		
2	20BA002		
3	20BA003		
	No of students scores upto expected level (70%)		
	% of scoring above the attainment level		

2. Course Outcome attainment level indicator		
	3	2
Range of attainment	70	50-70
Mapping with CO		
Attainment level of each CO		
ATTAINMENT LEVEL OF ALL CO		
Mapping with PO		



NANDHA ENGINEERING COLLEGE

(Autonomous)

Affiliated to Anna University Chennai ★ Approved by AICTE ★ Accredited by NBA-New Delhi
Pitchandampalayam (PO), Vaikkalmedu, Erode, Perundurai Road, ERODE –638 052.



DEPARTMENT OF MANAGEMENT STUDIES

NANDHA ENGINEERING COLLEGE, ERODE-638052



DEPARTMENT OF MANAGEMENT STUDIES

ASSIGNMENT 2 ANALYSIS

COURSE CODE & COURSE NAME:

Each question Expected Level of attainment - 70%

S No	<i>TOTAL STRENGTH =</i>		
	ROLL NO	A1 (5)	<i>TEST SCORE</i>
	Expected Marks to attainment	3.5	
1	20BA001		
2	20BA002		
3	20BA003		
4	20BA004		
	No of students scores upto expected level (70%)		
	% of scoring above the attainment level		
2. Course Outcome attainment level indicator			
		3	2
	Range of attainment	70	50-70
	Mapping with CO		
	Attainment level of each CO		
	ATTAINMENT LEVEL OF ALL CO		
	Mapping with PO		



NANDHA ENGINEERING COLLEGE

(Autonomous)

Affiliated to Anna University Chennai ★ Approved by AICTE ★ Accredited by NBA-New Delhi
Pitchandampalayam (PO), Vaikkalmedu, Erode, Perundurai Road, ERODE –638 052.



DEPARTMENT OF MANAGEMENT STUDIES

Case Study Attainment:

NANDHA ENGINEERING COLLEGE, ERODE-638052

DEPARTMENT OF MANAGEMENT STUDIES



CASE STUDY I ANALYSIS

COURSE CODE & COURSE NAME:

FACULTY NAME:

Each question Expected Level of attainment - 70%

S No	TOTAL STRENGTH =36		
	ROLL NO	A1 (5)	TEST SCORE
	Expected Marks to attainment	3.5	
1	20BA001		
2	20BA002		
3	20BA003		
4	20BA004		
5	20BA005		
No of students scores upto expected level (70%)			
% of scoring above the attainment level			
2. Course Outcome attainment level indicator			
		3	2
Range of attainment		70	50-70
Mapping with CO		CO1.1 & CO2.1	
Attainment level of each CO			
ATTAINMENT LEVEL OF ALL CO		CO1.1 & CO2.1	



NANDHA ENGINEERING COLLEGE

(Autonomous)

Affiliated to Anna University Chennai ★ Approved by AICTE ★ Accredited by NBA-New Delhi
Pitchandampalayam (PO), Vaikkalmedu , Erode, Perundurai Road, ERODE –638 052.



DEPARTMENT OF MANAGEMENT STUDIES

NANDHA ENGINEERING COLLEGE, ERODE-638052

DEPARTMENT OF MANAGEMENT STUDIES



CASE STUDY II ANALYSIS

COURSE CODE & COURSE NAME:

FACULTY NAME:

Each question Expected Level of attainment - 70%

S No.	TOTAL STRENGTH =		
	ROLL NO	A1 (5)	TEST SCORE
	Expected Marks to attainment	3.5	
1	20BA001		
2	20BA002		
3	20BA003		
4	20BA004		
	No of students scores up to expected level (70%)		5
	% of scoring above the attainment level		
2. Course Outcome attainment level indicator			
		3	2
	Range of attainment	70	50-70
	Mapping with CO	CO2.1&CO3.1	
	Attainment level of each CO		
	ATTAINMENT LEVEL OF ALL CO	CO2.1&CO3.1	
	Mapping with PO	1,2,3,4,5	



NANDHA ENGINEERING COLLEGE

(Autonomous)

Affiliated to Anna University Chennai ★ Approved by AICTE ★ Accredited by NBA-New Delhi
Pitchchandampalayam (PO), Vaikkalmedu , Erode, Perundurai Road, ERODE –638 052.



DEPARTMENT OF MANAGEMENT STUDIES



NANDHA ENGINEERING COLLEGE (AUTONOMOUS), ERODE-52

DEPARTMENT OF MANAGEMENT STUDIES

ATTAINMENT FOR LABORATORY MARKS -

SUBJECT CODE & SUBJECT NAME :

COURSE END SURVEY

SUBJECT HANDLING FACULTY

S.No	Reg. No.	CO1	CO2
1	20BA001		
2	20BA002		
3	20BA003		
4	20BA004		
5	20BA005		
6	20BA006		
AVERAGE			



NANDHA ENGINEERING COLLEGE

(Autonomous)

Affiliated to Anna University Chennai ★ Approved by AICTE★ Accredited by NBA-New Delhi
Pitchchandampalayam (PO), Vaikkalmedu , Erode, Perundurai Road, ERODE –638 052.



DEPARTMENT OF MANAGEMENT STUDIES

NANDHA ENGINEERING COLLEGE, PERUNDURAI, ERODE-638052



DEPARTMENT OF MANAGEMENT STUDIES

ACADEMIC YEAR 2021-22 EVEN (BATCH 2020-22)

OVERALL ATTAINMENT - Expected Level of Attainment - 70%

COURSE CODE & COURSE NAME:

FACULTY NAME:

DIRECT ASSEMENT	ATTAINMENT %				
	CO1.1	CO2.1	CO3.1		
CAT 1					
CAT 2					
AVERAGE OF CAT					
Assignment 1					
Assignment2					
AVERAGE OF ASSIGNMENT					
CASE STUDY 1					
CASE STUDY 2					
AVERAGE OF Case study					
CO ATTAINMENT (3) (30% of CAT + 10% of Assignment + 10% of OLT)					
End Sem(3)					



NANDHA ENGINEERING COLLEGE

(Autonomous)

Affiliated to Anna University Chennai ★ Approved by AICTE ★ Accredited by NBA-New Delhi
Pitchandampalayam (PO), Vaikkalmedu, Erode, Perundurai Road, ERODE –638 052.



DEPARTMENT OF MANAGEMENT STUDIES

50% END SEM + 50% CAT (Direct Assessment)					
Course End Survey (Indirect Assessment)					
Final CO% Attainment (80% of Direct +20% of Indirect)					
CO-PO Articulation Matrix					
CO No	PO1	PO2	PO3	PO4	PO5
1.1					
2.1					
3.1					
WEIGHTED AVERAGE					
AVERAGE OUT OF 3					
PO Attainment %					
CO Attainment	PO1	PO2	PO3	PO4	PO5
	A	b	c	d	e
1.1					
1.2					
1.3					
Overall PO ATTAINMENT (Weighted Average)					



NANDHA ENGINEERING COLLEGE

(Autonomous)

Affiliated to Anna University Chennai ★ Approved by AICTE ★ Accredited by NBA-New Delhi
Pitchandampalayam (PO), Vaikkalmedu , Erode, Perundurai Road, ERODE –638 052.



DEPARTMENT OF MANAGEMENT STUDIES

Overall PO ATTAINMENT OUT OF 3					
Overall PO ATTAINMENT PERCENTAGE					



NANDHA ENGINEERING COLLEGE

(Autonomous)

Affiliated to Anna University Chennai ★ Approved by AICTE ★ Accredited by NBA-New Delhi
Pitchchandampalayam (PO), Vaikkalmedu , Erode, Perundurai Road, ERODE –638 052.



DEPARTMENT OF MANAGEMENT STUDIES

LABORATORY COURSE SAMPLE ATTAINMENT FORMAT



NANDHA ENGINEERING COLLEGE

(Autonomous)

Affiliated to Anna University Chennai ★ Approved by AICTE ★ Accredited by NBA-New Delhi
Pitchchandampalayam (PO), Vaikkalmedu, Erode, Perundurai Road, ERODE –638 052.



DEPARTMENT OF MANAGEMENT STUDIES



NANDHA ENGINEERING COLLEGE (AUTONOMOUS), ERODE-52

DEPARTMENT OF MANAGEMENT STUDIES

ATTAINMENT FOR LABORATORY MARKS -

SUBJECT CODE & SUBJECT NAME :

SUBJECT HANDLING FACULTY:

TARGET ATTAINMENT (in Percentage) =

STUDENT STRENGTH =

S.NO	Reg No.	ESE
Grade (O=10, A+=9, A=8, B+=7, B=6)		
Expected Marks to attainment		
1	20BA001	
2	20BA002	
3	20BA003	
4	20BA004	
No of students got 'RA'		
No of students scores upto expected level		
% of scoring above the attainment level		
Course Outcome attainment level indicator		
Range of attainment	3	1
	>=70	>=50 AND <=69
Mapping with CO		
Attainment level of each CO		



NANDHA ENGINEERING COLLEGE

(Autonomous)

Affiliated to Anna University Chennai ★ Approved by AICTE ★ Accredited by NBA-New Delhi
Pitchandampalayam (PO), Vaikkalmedu , Erode, Perundurai Road, ERODE –638 052.



DEPARTMENT OF MANAGEMENT STUDIES

NANDHA ENGINEERING COLLEGE (AUTONOMOUS), ERODE-52

DEPARTMENT OF MANAGEMENT STUDIES

ATTAINMENT FOR LABORATORY MARKS -

SUBJECT CODE & SUBJECT NAME :

COURSE END SURVEY

SUBJECT HANDLING FACULTY

S.No	Reg. No.	CO1	CO2
1	20BA001		
2	20BA002		
3	20BA003		
4	20BA004		
5	20BA005		
6	20BA006		
AVERAGE			



NANDHA ENGINEERING COLLEGE

(Autonomous)

Affiliated to Anna University Chennai ★ Approved by AICTE ★ Accredited by NBA-New Delhi
Pitchandampalayam (PO), Vaikkalmedu, Erode, Perundurai Road, ERODE –638 052.



DEPARTMENT OF MANAGEMENT STUDIES

OVERALL ATTAINMENT FOR LABORATORY COURSES

DIRECT ASSEMENT	ATTAINMENT %				
	CO1.1	CO1.2			
Individual Experiments					
Model Marks					
Average of Model marks					
Average of Internal Marks					
End Semester Marks					
50% END SEM + 50% CAT (Direct Assessment)					
Course End Survey (Indirect Assessment)					
Final CO% Attainment (80% of Direct +20% of Indirect)					
CO No	PO1	PO2	PO3	PO4	PO5
1.1					
1.2					
WEIGHTED AVERAGE					
AVERAGE OUT OF 3	3	3	2	2	2
CO Attainment	PO1	PO2	PO3	PO4	PO5
	a	b	c	d	e
1					
2					
Overall PO ATTAINMENT (Weighted Average)					
Overall PO ATTAINMENT OUT OF 3					
Overall PO ATTAINMENT PERCENTAGE					